

— SESAVITA® Quality Assurance —

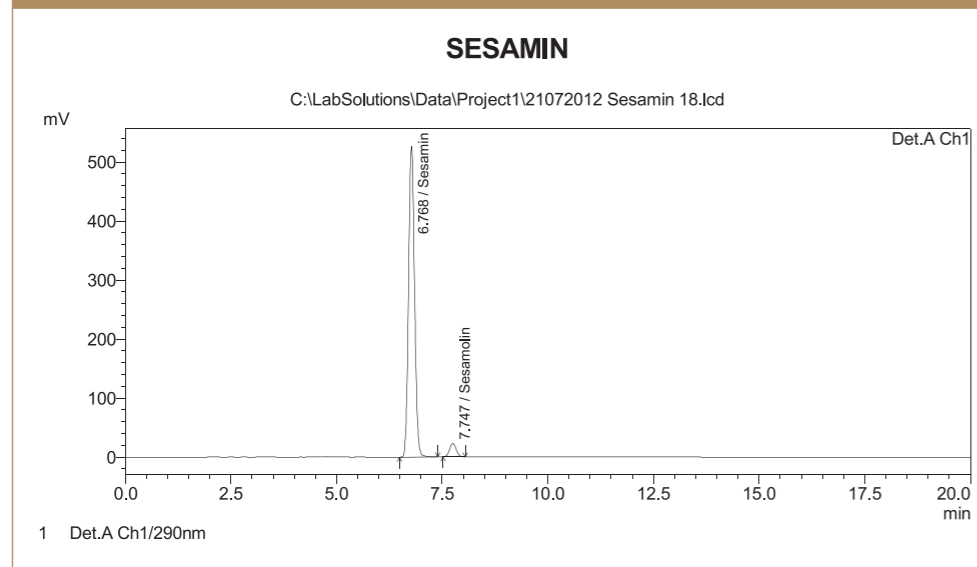
Our strict QC/QA regime ensures all the Sesavita® batches strictly adhere to our self-quality control system. Each lot is tested for the presence of active principle, Sesamin, by HPLC. Human clinical tests confirm the safety and efficacy of Sesavita®

Specification (Sesamin 70%)

Description	: Off white to beige color powder
Loss on drying	: Not more than 2.0%
Water solubility	: Not more than 30.0%
Alcohol solubility	: Not less than 50.0%
Heavy Metals	: Not more than 20.0ppm
Arsenic	: Not more than 1.0ppm
Lead	: Not more than 10.0ppm
Tapped Bulk Density	: Between 0.40 and 0.80 g/ml
Content of Sesamin	: Not less than 70.0% (by HPLC)
Microbiological profile	: As per JPN food regulation



HPLC test confirmation for content of Sesamin



SESAVITA®



BIO ACTIVES JAPAN CORPORATION

2-15-9-9F, Kita-otsuka Toshima-ku, Tokyo 170-0004 Japan
TEL: +81-3-5981-0601 / FAX: +81-3-5981-0602
E-mail: info@bioactivesjapan.com <http://www.bioactives.co.jp/>

The statements and product shown here have not been evaluated by the Food and Drug Administration. This product is not intended to diagnose, treat, cure, or prevent any disease.

SESAVITA® is a registered trademark of BIO ACTIVES JAPAN CORPORATION.

SESAVITA®

BIO ACTIVES JAPAN CORPORATION

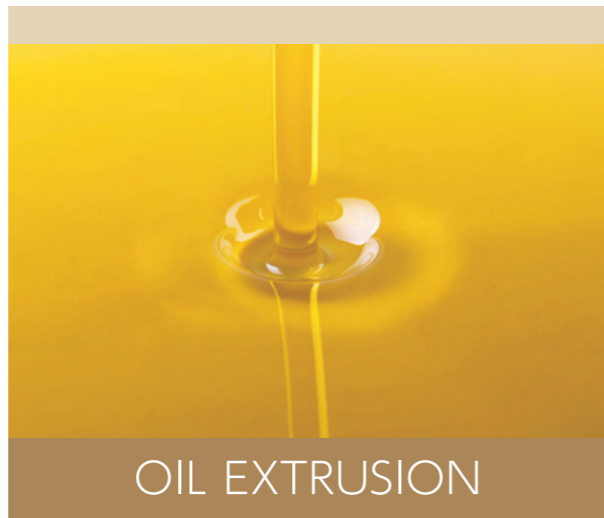


Seed Selection

Organic Cultivation

- Selection of cultivar seeds for cultivation (black or white).
- Monitored cultivation & harvesting process.
- Application of natural pesticides and fertilizers obtained from neem; free from harmful pesticides.
- Real time software enabled track and trace technology.

1



OIL EXTRUSION

- Dedicated sesame oil extrusion facility – ISO certified.
- Processed using VSIC technology process to have lesser moisture content and increased shelf life.
- Every lot is tested for heavy metals, aflatoxins, microbial levels etc.
- Specifically uses contract cultivated white or black sesame seeds ensuring 100% traceability.

2

SESAVITA®
PRODUCTION
PROCESS

SEED TO SHELF
TRACEABILITY SYSTEM

SESAVITA®

- Dedicated botanical extraction facility – ISO certified.
- Exclusively manufactured using sugarcane obtained alcohol and water for processing.
- Proprietary manufacturing and downstream process ensuring optimal temperature and pressure conditions to obtain highest quality extract.

3

EXTRACTION &
PROCESSING



- Every lot tested for active principles sesame Lignans – Sesamin.
- Additional analysis - Heavy Metals, Pesticides, Physical analysis, Microbiological analysis etc.
- HPLC & other analytical reports available for customer.
- Independent Toxicity, in-vivo and human clinical data available upon request.

4

QUALITY ASSURANCE



Open Sesame

- Sesame (*Sesamum indicum* fam. Pedaliaceae), is one of the most ancient and the oldest cultivated crops in the world dating back to 1600 BC.
- Sesame seed is highly nutritive containing 50% oil and 25% protein. And it is a very good source of Vitamin E and other minerals like copper, magnesium and calcium.
- Sesame is an excellent source of oil due to the presence of natural antioxidants such as sesamin, sesamol and sesamol.
- Sesame seeds have the highest phytosterol (plant sterol - cholesterol lowering) content compared to any other seeds and nuts.

Indian Sesame

1. Indian subcontinent gave origins to cultivation of sesame, hence name *S. indicum*. India is the largest producer and exporter of sesame seeds in the world.
2. Sustainable cultivation in Indian weather conditions: sesame is available throughout the year as it is grown in the winter as well as summer seasons.



Sesavita® Clinical indications



SesaVita® Invitro Study:

Invitro studies conducted using SesaVita® (standardized for 70% sesamin) showed pancreatic lipase inhibitory properties at various different concentrations tested. The inhibitory rate was 7.2%, 15.1%, 16.0%, and 17.5% at a concentration of 0.1, 1, 10 and 100 µg/mL solution (final concentration), respectively.

(Investigation of active inhibition effect for pancreatic lipase by using Indian Herbs. Report No:11022,Bio Actives Japan,2011)

SesaVita®:Clinical Study: Diabetes & Cholesterol Management

Human clinical study was conducted to understand the efficacy and safety of SesaVita® (Sesamin 70%) in the management of pre-diabetic and mild to moderate hyperlipidemic patients. The study was modeled as a randomized, double blind placebo controlled. Twenty patients were divided into two groups of ten each and segregated as placebo and SesaVita®. Subjects were administered 250 mg X twice daily of SesaVita® and were tested at baseline, 3 weeks and 6 weeks.

Results: Results suggested after completion of 6 weeks administration in pre-diabetes and mild-to-moderate hyperlipidaemia subjects, showed decrease in lipid parameters and glycemic values. A statistical significant reduction was observed in LDL-C, oral glucose tolerance (OGTT) and fasting blood sugar levels at week 3 and week 6 (p<0.01) when administered with SesaVita®.

(Study No.: OLS-S-OB-IP/03-12; Clinical Trials Registry-India (CTRI) No.: CTRI/2012/05/002678, Test completion – August 2012)

